




Join us
for our inaugural
International
Timpani Intensive!

ITI

JUNE 9TH - 14TH

 HYBRID ATTENDANCE

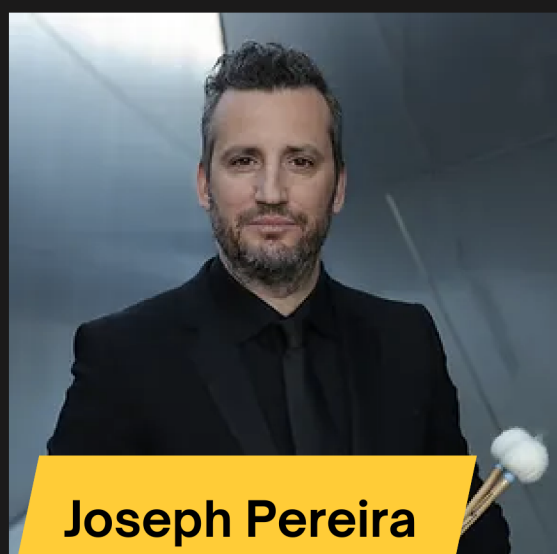
Core Curriculum

-  8 Masterclasses, 1 Special Event, Group Warm-ups
-  1 Hour Private Lesson for Every Participant
-  Mock Audition: Winner performs with Houston Symphony

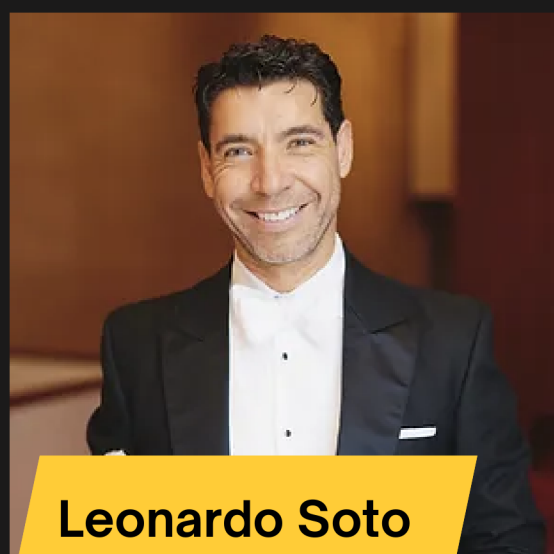
2024 ITI FACULTY ARTISTS



Nick Woud



Joseph Pereira



Leonardo Soto



Matthew Strauss



Jeffrey Luft

ITI is based on a simple, yet
powerful idea:

celebrating our individual playing styles
in a community forum will make us all
better musicians.

REGISTRATION FEE

Participant	\$900
Auditor	\$650
Virtual	\$149

REGISTER ONLINE AT
WWW.ITIMPANI.COM

RICE UNIVERSITY

Shepherd School of Music
6100 Main St, Houston, TX 77005

IN PARTNERSHIP WITH



RICE UNIVERSITY

HOUSTON
SYMPHONY

June 10th - June 14, 2024 Schedule of Events



ITI	Monday	Tuesday	Wednesday	Thursday	Friday
8:00AM	ITI Welcome Breakfast	Group Warmup	Group warmup	Group Warmup	Group Warmup
8:30AM					
9:00AM	ITI Introductions & Class #1 Matthew Strauss Two is Better than One! Repertoire That Uses Two Timpanists with Leonardo Soto	Special Event! Jeff Luft Timpani Mallet Wrapping	Class #5 Leonardo Soto Rhythmic Interpretation and How it Applies to the Repertoire	Class #7 Joseph Pereira A New Direction Towards Efficiency Part 2: Tone/Sound Musical Applications	ITI Timpani Mock Audition Final Round
9:30AM					
10:00AM					
10:30AM					
11:00AM					
11:30AM	Lunch	Lunch	Lunch	Lunch	ITI Mock Audition Results and Q&A with Faculty
12:00PM					
12:30PM					
1:00PM	Class #2 Leonardo Soto Audition Preparation: Are You Ready to Win!?	Class #3 Nick Woud European Tradition and Sounds	Class #6 Matthew Strauss Exploring the Important Timpani Parts Found in Concertos	ITI Timpani Mock Audition Preliminary Round	Lunch
1:30PM					
2:00PM					
2:30PM					
3:00PM	Private Lessons	-Break-	Private Lessons		Private Lessons
3:30PM					
4:00PM					
4:30PM					
5:00PM		Class #4 Joseph Pereira A New Direction Towards Efficiency Part 1: Tuning and Basic Technique			Class #8 Nick Woud Relation Between Baroque, Classical, and Romantic Timpani Playing
5:30PM					
6:00PM					
6:30PM					
7:00PM					ITI Farewell Dinner